

PREX1 Antibody (Center)
Affinity Purified Rabbit Polyclonal Antibody (Pab)
Catalog # AP9461c

Specification

PREX1 Antibody (Center) - Product Information

Application	WB,E
Primary Accession	Q8TCU6
Reactivity	Human
Host	Rabbit
Clonality	Polyclonal
Isotype	Rabbit IgG
Calculated MW	186203
Antigen Region	567-594

PREX1 Antibody (Center) - Additional Information

Gene ID 57580

Other Names

Phosphatidylinositol 3, 5-trisphosphate-dependent Rac exchanger 1 protein, P-Rex1, PtdIns(3, 5)-dependent Rac exchanger 1, PREX1, KIAA1415

Target/Specificity

This PREX1 antibody is generated from rabbits immunized with a KLH conjugated synthetic peptide between 567-594 amino acids from the Central region of human PREX1.

Dilution

WB~~1:1000

E~~Use at an assay dependent concentration.

Format

Purified polyclonal antibody supplied in PBS with 0.09% (W/V) sodium azide. This antibody is purified through a protein A column, followed by peptide affinity purification.

Storage

Maintain refrigerated at 2-8°C for up to 2 weeks. For long term storage store at -20°C in small aliquots to prevent freeze-thaw cycles.

Precautions

PREX1 Antibody (Center) is for research use only and not for use in diagnostic or therapeutic procedures.

PREX1 Antibody (Center) - Protein Information

Name PREX1

Synonyms KIAA1415

Function Functions as a RAC guanine nucleotide exchange factor (GEF), which activates the Rac proteins by exchanging bound GDP for free GTP. Its activity is synergistically activated by phosphatidylinositol 3,4,5-trisphosphate and the beta gamma subunits of heterotrimeric G protein. May function downstream of heterotrimeric G proteins in neutrophils.

Cellular Location

Cytoplasm, cytosol. Cell membrane. Note=Mainly cytosolic. Some amount is apparently associated to the plasma membrane

Tissue Location

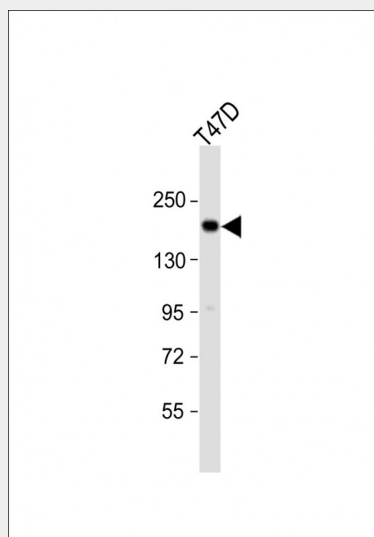
Mainly expressed in peripheral blood leukocytes and brain. Expressed at intermediate level in spleen and lymph nodes, and weakly expressed in other tissues

PREX1 Antibody (Center) - Protocols

Provided below are standard protocols that you may find useful for product applications.

- [Western Blot](#)
- [Blocking Peptides](#)
- [Dot Blot](#)
- [Immunohistochemistry](#)
- [Immunofluorescence](#)
- [Immunoprecipitation](#)
- [Flow Cytometry](#)
- [Cell Culture](#)

PREX1 Antibody (Center) - Images



Anti-PREX1 Antibody (Center) at 1:1000 dilution + T47D whole cell lysate Lysates/proteins at 20 µg per lane. Secondary Goat Anti-Rabbit IgG, (H+L), Peroxidase conjugated at 1/10000 dilution. Predicted band size : 186 kDa Blocking/Dilution buffer: 5% NFDm/TBST.

PREX1 Antibody (Center) - Background

The protein encoded by this gene acts as a guanine nucleotide exchange factor for the RHO family of small GTP-binding proteins (RACs). It has been shown to bind to and activate RAC1 by exchanging bound GDP for free GTP. The encoded protein, which is found mainly in the cytoplasm,

is activated by phosphatidylinositol-3,4,5-trisphosphate and the beta-gamma subunits of heterotrimeric G proteins.

PREX1 Antibody (Center) - References

Carretero-Ortega, J., et al. Mol. Pharmacol. 77(3):435-442(2010)
Ledezma-Sanchez, B.A., et al. Biochem. Biophys. Res. Commun. 391(4):1647-1652(2010)
Takefuji, M., et al. J. Hum. Genet. 55(1):42-49(2010)
Qin, J., et al. Oncogene 28(16):1853-1863(2009)
Waters, J.E., et al. J. Cell. Sci. 121 (PT 17), 2892-2903 (2008)
Sugiyama, N., et al. Mol. Cell Proteomics 6(6):1103-1109(2007)
Weiner, O.D. Curr. Biol. 12 (12), R429-R431 (2002)